

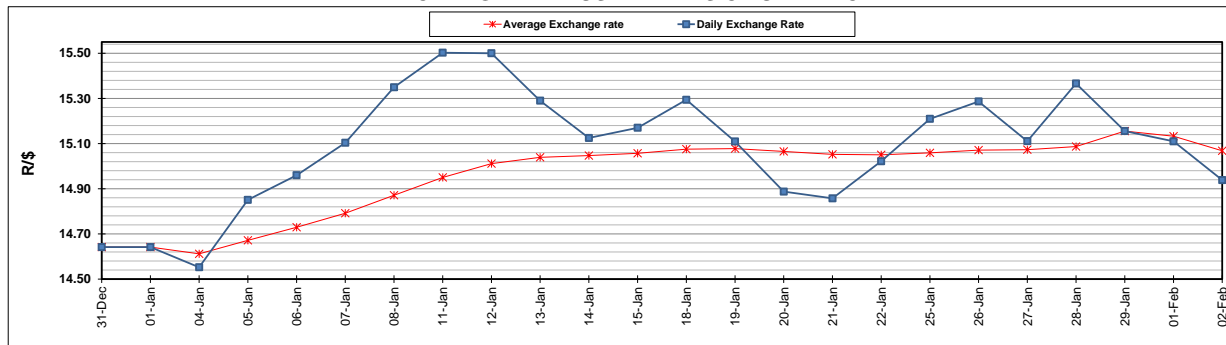
	PETROL 95 ULP	PETROL 93 ULP & LRP	DIESEL 0.05%	DIESEL 0.005%	ILL. PAR.
GAUTENG PUMP PRICE (SA c/l) AS FROM 03/02/2021	1,567.000	1,550.000	-	-	-
WHOLESALE PRICE (SA c/l) AS FROM 03/02/2021	-	-	1,358.420	1,360.820	798.688
SINGLE NATIONAL MAXIMUM RETAIL PRICE	-	-	-	-	1,008.000
BASIC FUEL PRICE - 02/02/2021 (SA c/l)	619.457	610.526	614.123	618.037	596.811
PRESS RELEASE CONTRIBUTION TO BFP 29/01/2021 - 02/02/2021 (SA c/l)	519.170	512.170	541.630	543.030	527.128
UNIT OVER/(UNDER) RECOVERY - 02/02/2021 (SA c/l)	(100.287)	(98.356)	(72.493)	(75.007)	(69.683)
AVERAGE BASIC FUEL PRICE 29/01/2021 - 02/02/2021	611.913	603.924	603.458	607.350	587.162
AVERAGE UNIT OVER/(UNDER) RECOVERY 29/01/2021 - 02/02/2021	(92.743)	(91.754)	(61.828)	(64.320)	(60.034)

ANALYSIS MOVEMENT OF AVERAGE OVER/(UNDER) RECOVERY

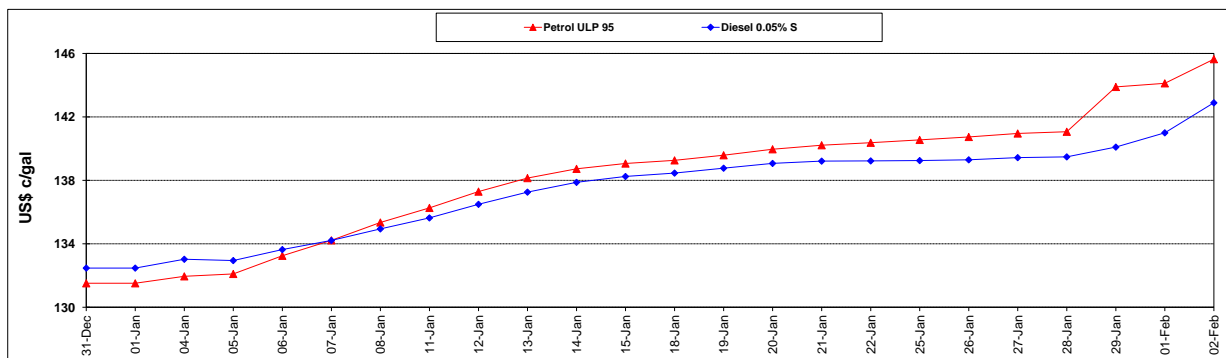
	PETROL 95	PETROL 93	DIESEL 0.05%	DIESEL 0.005%	ILL. PAR.
- MOVEMENT IN INTERNATIONAL PRODUCT PRICES	(93.523)	(92.524)	(62.597)	(65.094)	(60.782)
- MOVEMENT IN EXCHANGE RATE	0.780	0.770	0.769	0.774	0.748
AVERAGE UNIT OVER/(UNDER) RECOVERY 29/01/2021 - 02/02/2021	(92.743)	(91.754)	(61.828)	(64.320)	(60.034)

R/\$ EXCHANGE RATE - (R/\$14.9385 - 02/02/2021)

EXCHANGE RATE USED IN BASIC FUEL PRICE



INTERNATIONAL PRODUCT PRICES OF BASKET USED IN BASIC FUEL PRICE



BASIC FUEL PRICE IN SA CENTS PER LITRE

